



**PAYA**  
**Group**

0333 123 1243  
[www.payagroup.co.uk](http://www.payagroup.co.uk)  
[enquiries@payagroup.co.uk](mailto:enquiries@payagroup.co.uk)

# Ingenico Family For Retail

Bringing real flexibility to payments

**ingenico**  
aWorldlinebrand



The iWL200 range was designed to become the portable payment platform par excellence. Incorporating the most advanced technology and efficient power management, its mobile device has a capacity of more than a full day under the most intensive use conditions.

The wide range of connectivity options, including GPRS, Bluetooth, Wi-Fi or IP/PSTN means this range covers all bases.



## ICT250 Static / Desktop

- No better solution for a retail POS environment where versatility and reliability are key
- Smart and Compact, this device is designed for maximum efficiency
- Accept all payment method including EMV, Chip & PIN, Magstripe and NFC/Contactless
- Safe and Secure Payment – certified to the industry's latest standard

## IWL252 Bluetooth

- Bluetooth technology giving you up to 100-meter range
- Accepts all payment method including EMV, Chip & PIN, Magstripe and NFC/Contactless
- Safe and Secure Payment – certified to the industry's latest standard

## IWL258 Wi-Fi

- Our Wi-Fi card machine connects directly to a wireless router therefore cables are not required
- Accepts all payment method including EMV, Chip & PIN, Magstripe and NFC/Contactless
- Safe and Secure Payment – certified to the industry's latest standard

## IWL251 GPRS

- Roaming SIM Card so you're not restricted to just one network
- Accepts all payment method including EMV, Chip & PIN, Magstripe and NFC/Contactless
- Safe and Secure Payment – certified to the industry's latest standard
- Pocket-sized and super lightweight, this is the perfect mobile device



## Move/5000

Boost sales on-the-go with a world of Business Apps



contactless



security



connectivity



touchscreen



barcode



camera



html 5 standard

### Premium Security

This product is PCI-PTS 5.x certified and fulfils the most recent software and hardware security requirements. The Telium TETRA OS is able to utilise the most recent cryptographic schemes. Its key length is future-proof and will ensure continued security. Maintain security for you and your customers.

### Accept All Payments

With the Move/5000 you will be able to support all methods of card payments. This includes: EMV chip and PIN, chip and sign, signature capture, magstripe, and NFC or contactless.

### Easy to Learn and Use

This product features a large 3.5-inch colour touchscreen and a range of powerful multimedia capabilities. The Move/5000 is able to provide the best experience for the user thanks to its dynamic interface.

### Pay Anywhere, Anytime

There is no room for compromise when it comes to connectivity in your payment processing terminal. The Move/5000 is able to ensure the highest reliability standard by offering multiple connectivity options. These include Wi-Fi, Bluetooth, and 4G/LTE. These will guarantee that your payment processing system is available anywhere your business takes you.

### Built-in Abilities

The Move/5000 has the option to include a barcode scanner or camera, and GPS tracking. This allows alternative payment structures and an unlimited number of possibilities for inventive business applications.

### Smooth Contactless Payments

The Move/5000 is able to keep transactions flowing quickly by offering a reserved card reader that faces the customer, enabling contactless payment acceptance that runs smoothly and worry-free.



## Easy to Set Up

Our team will make sure your device is set up and ready to use straight out of the box, saving you time and ensuring you're ready to collect card payments right away. All you need to do is connect via your chosen connectivity method and follow the on-screen prompts.

## Full Support

Our Terminal Support Helpdesk are on hand for any assistance you may need. T: 0345 459 9984 option 3.

Support is available Monday - Sunday 08:00am - 20:00pm 7 days a week.



## PAYA Group Services

- We manage the application for your merchant account.
- We set-up your Merchant Portal and allow you to track your donations.
- We supply the contactless donation boxes.
- We provide UK based on-going support.

## Single Provider. Merchant Account. Merchant Portal. UK Support.

PAYA Group provides everything you need in one place, making it easier to set-up and manage your services and avoiding the complexity of multiple suppliers.

In addition to the latest technology, we offer a choice of device types, free set-up and an Merchant Portal to manage your services, transactions, box settings and campaigns in real-time.

## 100% Online Application

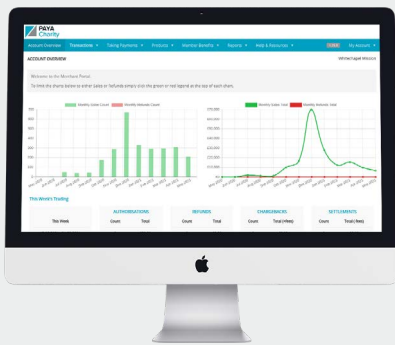
To get started visit our website and apply for a Merchant Account. The application is 100% online and there are no set up fees to pay.

Once we've approved your application, we'll contact you to arrange the delivery of your device(s).

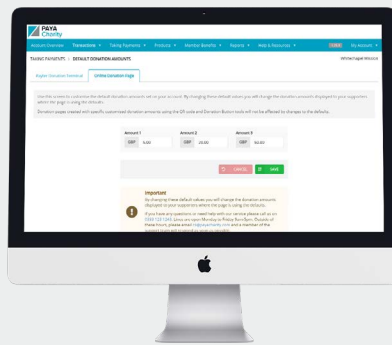
## Merchant Portal Features & Benefits

Once you have set up a PAYA Group account, you will be given access to the Merchant Portal. The Merchant Portal allows you to monitor the progress of your device performance.

Your transactions are viewable in graph and table form, giving you a quick visual summary of your transaction worth each month.



Track the performance of your donation boxes in real-time, adapting your campaign strategy to achieve optimal results.



Manage contactless box settings online. View transactions, order products, reconcile statements and more.

**Benefit from higher Volume, Higher Value Donations Today!**





# PAYA Group

0333 123 1243  
[www.payagroup.co.uk](http://www.payagroup.co.uk)  
[enquiries@payagroup.co.uk](mailto:enquiries@payagroup.co.uk)

## Contact us for more information

0333 123 1243  
[www.payagroup.co.uk](http://www.payagroup.co.uk)  
[enquiries@payagroup.co.uk](mailto:enquiries@payagroup.co.uk)



0333 123 1243  
[www.payagroup.co.uk](http://www.payagroup.co.uk)  
[enquiries@payagroup.co.uk](mailto:enquiries@payagroup.co.uk)

